



## Certificate of Analysis

**Customer:**  
High Culture  
232 Reem Creek Rd Suite 1  
Weaverville, NC 28787

Sample ID: **211025006**  
Order Number: **CB211025004**  
Sample Name: **Maige**

Collected Date:  
Received Date: **10/25/2021**  
COA Released: **10/27/2021**

External Sample ID:  
Batch Number:  
Product Type: **Flower**  
Sample Type: **Flower**

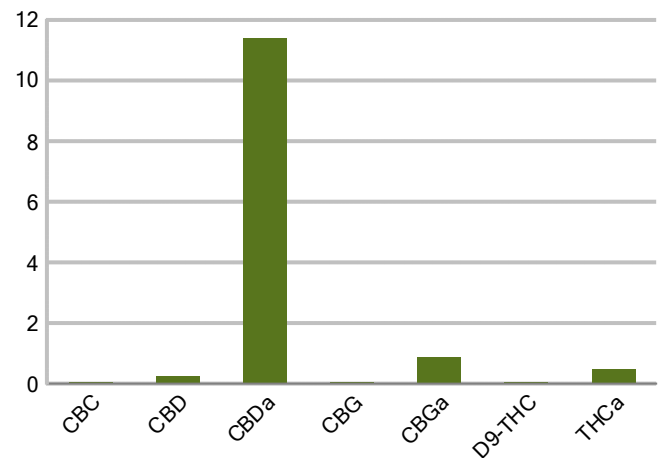
Comments:

### CANNABINOID PROFILE

Analyte	LOQ (%)	% weight	mg/g
CBC	0.01	0.035	0.353
CBD	0.01	0.237	2.366
CBDa	0.01	11.39	113.9
CBDV	0.01	ND	ND
CBG	0.01	0.048	0.479
CBGa	0.01	0.861	8.615
CBN	0.01	ND	ND
d8-THC	0.01	ND	ND
d9-THC	0.01	0.040	0.396
THCa	0.01	0.486	4.859
<b>Total Cannabinoids</b>		<b>13.09</b>	<b>130.9</b>
<b>Total Potential THC</b>		<b>0.466</b>	<b>4.657</b>
<b>Total Potential CBD</b>		<b>10.22</b>	<b>102.2</b>
<b>Total Potential CBG</b>		<b>0.804</b>	<b>8.042</b>



Cannabinoids (% weight)



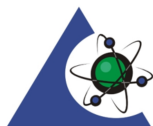
**Ratio of Total Potential CBD to Total Potential THC 21.93 : 1**

**Ratio of Total Potential CBG to Total Potential THC 1.73 : 1**

*\*Total Cannabinoids refers to the sum of all cannabinoids detected.*

*\*Total Potential CBD = (0.877 x CBDa) + CBD. \*Total Potential THC = (0.877 x THCa) + THC. \*Total Potential CBG = (0.877 x CBGa) + CBG.*

*\*Total Potential THC/CBD are calculated to take into account the loss of an acid group during decarboxylation.*



**PJLA**  
Testing  
Accreditation #109588

Authorized Signature

Laboratory Manager

Jamie Hobgood

10/27/2021 4:56 PM

DATE

This product has been tested by CannaBusiness Laboratories using validated testing methodologies and a quality system. Values reported relate only to the product tested. CannaBusiness Laboratories makes no claims as to the efficacy, safety or other risks associated with any detected or non-detected levels of any compounds reported herein. This Certificate shall not be reproduced except in full, without the written permission of CannaBusiness Laboratories. Uncertainty information is available on request. Photo is of sample received by the lab and may vary from final packaging. The results apply to the sample as received. ISO/IEC 17025:2017 Accredited.



Sample ID: 211025006  
Sample Name: Maige  
Sample Type: Flower

## Certificate of Analysis

### Customer

High Culture  
232 Reem Creek Rd Suite 1  
Weaverville, NC 28787



Overall Batch Results	
Pesticide	Moisture Content
Potency	Water Activity
Mycotoxins	Heavy Metals
Microbial Screen	Residual Solvents
Terpenoids	

Sample Name: Maige

Sample ID: 211025006

Product Type: Flower

Sample Type: Flower

Collected Date:

Received Date: 10/25/2021

Batch Number:

Batch Size:

Sample Size:

COA released: 10/27/2021 4:56 PM

### Potency (mg/g)

Date Tested: 10/26/2021

Method: CB-SOP-028

Instrument:

<b>0.466 %</b>	<b>10.22 %</b>	<b>13.09 %</b>	<b>130.9 mg/g</b>
Total THC	Total CBD	Total Cannabinoids	Total Cannabinoids

Analyte	Result	Units	LOQ	Result	Units
CBC (Cannabichromene)	0.035	%	0.010	0.353	mg/g
CBD (Cannabidiol)	0.237	%	0.010	2.366	mg/g
CBDa (Cannabidiolic Acid)	11.39	%	0.010	113.9	mg/g
CBDV (Cannabidivarin)	ND	%	0.010	ND	mg/g
CBG (Cannabigerol)	0.048	%	0.010	0.479	mg/g
CBGa (Cannabigerolic Acid)	0.861	%	0.010	8.615	mg/g
CBN (Cannabinol)	ND	%	0.010	ND	mg/g
D8-THC (D8-Tetrahydrocannabinol)	ND	%	0.010	ND	mg/g
D9-THC (D9-Tetrahydrocannabinol)	0.040	%	0.010	0.396	mg/g
THCa (Tetrahydrocannabinolic Acid)	0.486	%	0.010	4.859	mg/g

### Terpenoids

Date Tested: 10/26/2021

Method: CB-SOP-026

Instrument:

Analyte	Result	Unit	LOQ	Result	Unit
alpha-Bisabolol	<LOQ	mg/g	0.100	<LOQ	%
alpha-humulene	0.101	mg/g	0.100	0.0101	%
alpha-pinene	0.837	mg/g	0.100	0.0837	%
alpha-terpinene	<LOQ	mg/g	0.100	<LOQ	%
beta-caryophyllene	0.370	mg/g	0.100	0.0370	%
Beta-myrcene	2.746	mg/g	0.100	0.2746	%
Beta-pinene	0.323	mg/g	0.100	0.0323	%
cis-Nerolidol	<LOQ	mg/g	0.100	<LOQ	%
Camphene	<LOQ	mg/g	0.100	<LOQ	%
d-Limonene	0.409	mg/g	0.100	0.0409	%
delta-3-Carene	<LOQ	mg/g	0.100	<LOQ	%
Eucalyptol	<LOQ	mg/g	0.100	<LOQ	%
gamma-Terpinene	<LOQ	mg/g	0.100	<LOQ	%
Geraniol	<LOQ	mg/g	0.100	<LOQ	%
Guaiol	0.180	mg/g	0.100	0.0180	%
Isopulegol	<LOQ	mg/g	0.100	<LOQ	%
Linalool	0.236	mg/g	0.100	0.0236	%
Ocimene (mixture of isomers)	<LOQ	mg/g	0.100	<LOQ	%
p-Isopropyltoluene (p-Cymene)	<LOQ	mg/g	0.100	<LOQ	%
trans-beta-Ocimene	<LOQ	mg/g	0.100	<LOQ	%
trans-Nerolidol	<LOQ	mg/g	0.100	<LOQ	%
Terpinolene	<LOQ	mg/g	0.100	<LOQ	%

### Foreign Material

Result Note

Date Tested: 10/25/2021

Absence

### Water Activity

Result Units

LOQ

Result

Date Tested: 10/27/2021

0.536 Aw 0.030

### Pesticides

Date Tested: 10/27/2021

Method: CB-SOP-025

Instrument:

Analyte	Result	Units	LOQ	Result	Analyte	Result	Units	LOQ	Result
Acephate	ND	ppm	0.010		Acetamiprid	ND	ppm	0.010	
Aldicarb	ND	ppm	0.010		Azoxystrobin	ND	ppm	0.010	
Bifenazate	ND	ppm	0.010		Bifenthrin	ND	ppm	0.100	
Boscalid	ND	ppm	0.010		Carbaryl	ND	ppm	0.010	
Carbofuran	ND	ppm	0.010		Chlorantraniliprole	ND	ppm	0.010	
Chlorpyrifos	ND	ppm	0.010		Clofentezine	ND	ppm	0.010	
Coumaphos	ND	ppm	0.010		Daminozide	ND	ppm	0.010	
Diazinon	ND	ppm	0.010		Dichlorvos	ND	ppm	0.010	
Dimethoate	ND	ppm	0.010		Etofenprox	ND	ppm	0.010	
Etoxazole	ND	ppm	0.010		Fenhexamid	ND	ppm	0.010	
Fenoxycarb	ND	ppm	0.010		Fenpyroximate	ND	ppm	0.010	
Fipronil	ND	ppm	0.010		Flonicamid	ND	ppm	0.100	

NT = Not tested, ND = Not detected; LOQ = Limit of Quantitation; <LOQ = Detected; >ULOL = Above upper limit of linearity; CFU/g = Colony forming units per 1 gram; TNTC = Too numerous to count

CannaBusiness Laboratories  
License # P-0059: (859)-514- 6999 <https://www.cannabusinesslabs.us>

This product has been tested by CannaBusiness Laboratories using validated testing methodologies and a quality system. Values reported relate only to the product tested. CannaBusiness Laboratories makes no claims as to the efficacy, safety, or other risks associated with any detected or non-detected levels of any compounds reported herein. This Certificate shall not be reproduced except in full, without the written permission of CannaBusiness Laboratories. Uncertainty information is available on request. Photo is of sample received by the lab and may vary from final packaging. The results apply to the sample as received. ISO/IEC 17025:2017 Accredited.



Sample ID: 211025006  
Sample Name: Maige  
Sample Type: Flower

## Certificate of Analysis

Pesticides							
Date Tested: 10/27/2021	Method: CB-SOP-025	Instrument:					

Analyte	Result	Units	LOQ	Result	Analyte	Result	Units	LOQ	Result
Fludioxonil	ND	ppm	0.010		Hexythiazox	ND	ppm	0.010	
Imazalil	ND	ppm	0.010		Imidacloprid	ND	ppm	0.010	
Malathion	ND	ppm	0.010		Metalaxyl	ND	ppm	0.010	
Methiocarb	ND	ppm	0.010		Methomyl	ND	ppm	0.010	
Myclobutanil	ND	ppm	0.010		Naled	ND	ppm	0.010	
Oxamyl	ND	ppm	0.010		Paclobutrazol	ND	ppm	0.010	
Phosmet	ND	ppm	0.010		Prallethrin	ND	ppm	0.010	
Propiconazole	ND	ppm	0.010		Propoxur	ND	ppm	0.010	
Pyrethrin I	ND	ppm	0.010		Pyrethrin II	ND	ppm	0.010	
Pyridaben	ND	ppm	0.010		Spinetoram	ND	ppm	0.010	
Spiromesifen	ND	ppm	0.010		Spirotetramat	ND	ppm	0.010	
Tebuconazole	ND	ppm	0.010		Thiacloprid	ND	ppm	0.010	
Thiamethoxam	ND	ppm	0.010		Trifloxystrobin	ND	ppm	0.010	
Ethoprophos	ND	ppm	0.010		Kresoxym-methyl	ND	ppm	0.010	
Permethrins	ND	ppm	0.010		Piperonyl Butoxide	<LOQ	ppm	0.010	
Spinosyn A	ND	ppm	0.010		Spiroxamine-1	ND	ppm	0.010	
AbamectinB1a	ND	ppm	0.010		Spinosyn D	ND	ppm	0.010	

Moisture Content							
Date Tested: 10/27/2021	Method: CB-SOP-020	Instrument:					

Analyte	Result	Units	LOQ	Result	Analyte	Result	Units	LOQ	Result
Percent Moisture	11	%	0.010						

Mycotoxins							
Date Tested: 10/27/2021	Method: CB-SOP-025	Instrument:					

Analyte	Result	Units	LOQ	Result	Analyte	Result	Units	LOQ	Result
Ochratoxin A	ND	ppm	0.010		Aflatoxin B1	ND	ppm	0.010	
Aflatoxin G2	ND	ppm	0.010		Aflatoxin B2	ND	ppm	0.010	
Aflatoxin G1	ND	ppm	0.010						

Metals							
Date Tested: 10/27/2021	Method: CB-SOP-027	Instrument:					

Analyte	Result	Units	LOQ	Result	Analyte	Result	Units	LOQ	Result
Arsenic	<LOQ	ppm	0.200		Cadmium	<LOQ	ppm	0.200	
Lead	<LOQ	ppm	0.200		Mercury	<LOQ	ppm	0.200	

Microbial							
Date Tested: 10/27/2021	Method:	Instrument:					

Analyte	Result	Units	LOQ	Result	Analyte	Result	Units	LOQ	Result
STEC (E. coli)	Negative				Salmonella	Negative			
L. monocytogenes	Negative				Yeast/Mold (qPCR)	0	CFUs		



### Authorized Signature

*J. Hobgood*  
Laboratory Manager

Jamie Hobgood

10/27/2021 4:57 PM

Date Time

NT = Not tested, ND = Not detected; LOQ = Limit of Quantitation; <LOQ = Detected; >ULOL = Above upper limit of linearity; CFU/g = Colony forming units per 1 gram; TNTC = Too numerous to count

CannaBusiness Laboratories  
License # P-0059: (859)-514- 6999 <https://www.cannabusinesslabs.us>

This product has been tested by CannaBusiness Laboratories using validated testing methodologies and a quality system. Values reported relate only to the product tested. CannaBusiness Laboratories makes no claims as to the efficacy, safety, or other risks associated with any detected or non-detected levels of any compounds reported herein. This Certificate shall not be reproduced except in full, without the written permission of CannaBusiness Laboratories. Uncertainty information is available on request. Photo is of sample received by the lab and may vary from final packaging. The results apply to the sample as received. ISO/IEC 17025:2017 Accredited.